

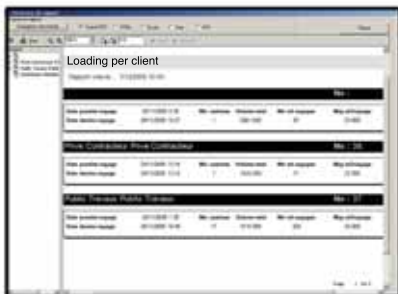


LogiNeige

Ensuring precise assessment of the performance of bulk material transportation while reducing operating costs!

Is the analysis and integration of your transportation and transaction data simple and adaptable enough for you to:

- enhance the efficiency of your business,
- reduce your operating costs and simplify site management by reducing its costs,
- increase security of site access,
- ensure access to precise data in real time,
- make the task of transport managers and operators easier?



LogiNeige yields real results by:

- helping to manage operations more efficiently with information provide on site traffic peaks and transported volumes;
- enabling automatic data collection and fast access to key information;
- enabling comparison of costs at each step of the transportation process according to certain parameters (year, client, carrier, etc.);
- ensuring independent 24/7 loading supervision;
- reducing administrative costs by cutting back on or altogether eliminating:
 - manual data entry;
 - searches brought about by mistakes;
 - information loss and so on.

Its main functionalities integrate:

- Automatic control of access to sites;
- Automatic processing and retrieval of transactions;
- Instant creation and modification of transactions;
- Encryption of loading data for increased security;
- Standard or advanced management of the main parameters (client, carrier, truck) according to need.

A solution developed by Génisys

LogiNeige is designed to optimize cost and operating management of bulk material transportation such as snow. Our product stands out because it is simple to use with its versatile modules. Besides eliminating hours of data search and processing, our solution is adaptable to your management system to ensure its complete integration.



Standard features:

- Standard components;
- Easy handling, sturdiness (tolerance to temperatures between -30°C and +40°C);
- Multiple data processing with the software;
- Fast and infinite data handling with Excel;
- Production of various management reports:
 - Transportation reports according to several parameters (client, zone, truck, site);
 - Transaction characteristics according to parameters;
 - Transportation cost per truck;
- Possible data transfer through TCP/IP connectivity (Internet et Ethernet) for simple communication;
- Access to online help in HTML format and technical support.

Main components:

- Contact memory for saving and transferring data;
- Wireless communication system;
- Embedded computer;
- Windows operating system;
- Access equipment – gate control, traffic light management;
- Administrative tool – easy data management and configuration of requests for producing preformatted reports.

A leader in combined industrial automation and computer data processing expertise, Génisys helps optimize productivity along with energy and environmental efficiency by offering practical solutions. Génisys believes in taking full account of market competition imperatives and the concerns of its clients. Synergic and applied know-how that provides organizations with a competitive edge is what Génisys and its LogiNeige solution are all about.